



Species List 2017





Species List 2017

This Species list was compiled with the help of Aquarium staff, Matthew Hawkins, Anna Quinn, Ian OGrady, Peter Biddulph, Garry Kendellen & Rory Mc Avinney.

Turloch Smith and Sárscoil Fíbin provided the Irish translation.

Please credit Galway Atlantaquaria if you use this resource.



Our Mission Statement

Is mian le Galway Atlantaquaria léargas cuimsitheach ar an saol faoi uisce a sholáthar i dtaispeántais atá soiléir agus suimiúil, le cúnamh foirne atá eolach cuiditheach agus beoléirithe spreagúla.

Galway Atlantaquaria, National Aquarium of Ireland seeks to present a comprehensive view of the world of water through clear and interesting displays, informed helpful staff and exciting live presentations and animal interaction sessions.

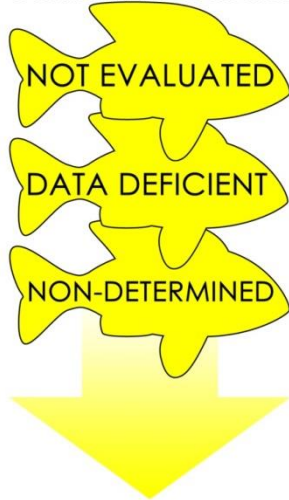
This is achieved through accurately displaying aquatic life in a manner that reflects their natural habitats, providing an enjoyable and educational environment to learn about the diverse marine ecosystem of Ireland.

As Ireland's largest aquarium we strive to ensure that a visit to the aquarium is original and full of wonder for visitors of all ages.

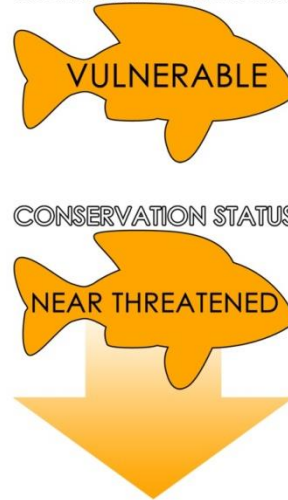
We hope you enjoy this list of marine life in our Aquarium, for more information about each species please email info@nationalaquarium.ie or call 091 585 100.

GALWAY ATLANTAQUARIA MARINE ANIMAL CONSERVATION GUIDE

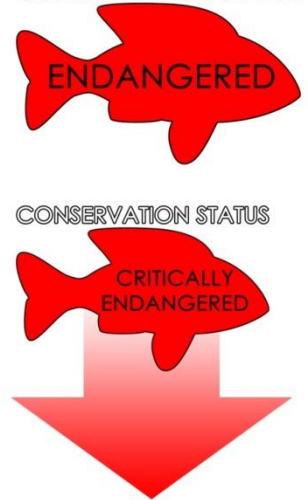
CONSERVATION STATUS



CONSERVATION STATUS



CONSERVATION STATUS



CONSERVATION STATUS



CONSERVATION STATUS



CONSERVATION STATUS



About these guides

These icons describe the marine animals 'risk' of conservation and endangerment. The icons are styled on The IUCN Red List of Threatened Species™.

Description

YELLOW: Not a good or bad colour, it represents a group of animals that are too hard to evaluate, or so abundant that proving its status is too difficult (e.g. Dogfish).

GREEN: A good colour, shows that the animal is abundant and classified as such.

AMBER: Shows that an animal is falling towards danger, and is at risk!

RED: Animals at this level need a collective effort to stop the eventual extinction of these animals.



2 spot Goby
Mach Siobháin Buí
Gobiusculus flavescens

Size: 8 cms.

Food: Feeds on plankton and small invertebrates.

Habitat: Found in estuaries and inshore waters.

CONSERVATION STATUS



Strawberry Anemone
Anemone sútha talún
Actinia fragacea

Size: 100 mm.

Food: Feeds on microorganisms.

Habitat: It is generally found on rocks of the lower shoreline and depths up to 8-10 metres.

CONSERVATION STATUS



Angelfish
Bráthair
Pterophyllum scalare

Size: 4 to 6 inches (Nose to Tail).

Food: Feeds primarily on small crustaceans and aquatic invertebrates.

Habitat: Species originate from the Amazon, South America.

CONSERVATION STATUS





Arctic Charr
Ruabhreac Artach
Salvelinus alpinus

Size: 100 cm.

Food: Feeds on insects and smaller fish.

Habitat: Found in streams and small, shallow, slow-flowing side channels.

CONSERVATION STATUS



Ballan Wrasse
Ballach Breac
Labrus bergylta

Size: 60 cm.

Food: Feeds on prawns and crustaceans.

Habitat: Found amongst rocks, seaweed and reefs.

CONSERVATION STATUS



Barbel
Barbal
Barbus barbus

Size: 50-100 cms.

Food: Feeds on benthic organisms.

Habitat: Fast-flowing rivers with gravel or stone bottoms.

CONSERVATION STATUS





Dublin Bay prawn
 Cloicheáin bhá Átha
 Cliath
Nephrops norvegicus

Size: 20 cm.

Food: Feeds on detritus, crustaceans and worms.

Habitat: Found on muddy bottoms where they dig burrows.

CONSERVATION STATUS



European Bass
 Doingean Mara Eorpach
Dicentrarchus labrax

Size: 100 cm.

Food: Feeds on shrimps and molluscs, & fish.

Habitat: Inhabits coastal waters.

CONSERVATION STATUS



Beadlet Anemone
 Bundún Coirineach
Actina equine

Size: 6 cm.

Food: Feeds on small marine animals.

Habitat: Lives under rocks, to the uppershore.

CONSERVATION STATUS





Black Goby
Mac Siobháin Dubh
Gobius niger

Size: 16 cms.

Food: Feeds on crustaceans and small crabs.

Habitat: Found in estuaries and inshore waters.

CONSERVATION STATUS



Longspine Black Urchin
Spine fada Urchin dubh
Diadema setosum

Size: 70 mm.

Food: Feeds on algae, and sometimes seagrass.

Habitat: Lives on hard and soft substrates to several hundred meters depth.

CONSERVATION STATUS



Tompot Blenny
Ceanruán Rocach
Parablennius gattorugine

Size: 30 cms.

Food: The powerful jaws are for crushing barnacles, crabs and any other suitable food available.

Habitat: They live on the seabed of rocky areas in shallow water.

CONSERVATION STATUS





Blonde Ray
Roc Aistriúchán
Raja brachyura

Size: 120 cm.

Food: Feeds on all kinds of benthic animals.

Habitat: Found on sand and rock bottoms.

CONSERVATION STATUS



Box Crab
Portán bosca
Paromola cuvieri

Size: Carapace 20 cm.
Claw span 1 metre.

Food: Scavenger of fallen prey on the sea floor.

Habitat: Atlantic Ocean and the Mediterranean Sea, found at depths of 10–1,000 metres.

CONSERVATION STATUS



Brill
Broit
Scophthalmus rhombus

Size: 40-75 cm.

Food: Will eat shrimp when young and eat other fish when older.

Habitat: This species usually lives on sandy seabeds.

CONSERVATION STATUS





Bristlenose Plecco
Hypostomus cirrhosus

Size: 4 to 6 inches.

Food: Feeds on hard attached algae.

Habitat: Found in a variety of habitats, from shallow low oxygen floodplains, to the deep, dark waters of rivers.

CONSERVATION STATUS



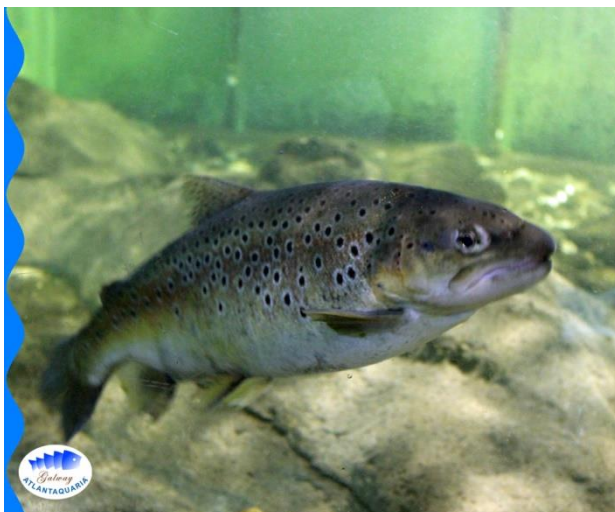
BrittleStar
Star brittle
Ophiuroidea

Size: 24 cms (arms).

Food: Feeds on microorganisms.

Habitat: Shallow waters amongst sand and rocks.

CONSERVATION STATUS



Brown Trout
Breac Donn
Salmo Trutta

Size: 40 – 80 cm.

Food: Diet includes invertebrates, other fish, and insects.

Habitat: Usually found migrating from lakes into rivers or streams to spawn (from october to march).

CONSERVATION STATUS





Bull Huss
 Fiogach Mór
Scliorhinus stellaris

Size: 1.5 Metre.

Food: A benthic scavenger that feeds on molluscs and crustaceans.

Habitat: Commonly found inshore and offshore.

CONSERVATION STATUS



Butterfish
 Sleamhnóg Airgid
Pholis gunnellus

Size: 30 cm.

Food: Crustaceans and small organisms.

Habitat: The intertidal zone.

CONSERVATION STATUS



Giraffe Cichlid
 Sioráf Cichlid
Nimbochromis Venus

Size: 25 cm.

Food: An exclusive piscivore and a maternal mouthbrooder.

Habitat: Found in Lake Malawi.

CONSERVATION STATUS





Clownloach
Chromobotia macracanthus

Size: 15 to 20 cms.

Food: Carnivore, feeds on other animals.

Habitat: Inhabits rivers and streams.

CONSERVATION STATUS



Clownfish
An Gairéadach
Amphiprion ocellaris

Size: 3-1/2 inches.

Food: Omnivorous, and can eat undigested food from their host anemones.

Habitat: Inhabits Tropical Reefs in the Indian and Pacific Oceans, and to the Red Sea.

CONSERVATION STATUS



Cod
Trosc
Gadus morhua

Size: 200 cms.

Food: Omnivorous will feed on invertebrates and fish, including young cod.

Habitat: From the shoreline down to the continental shelf.

CONSERVATION STATUS





Coalfish
Glasán
Polachius virens

Size: 130 cm.

Food: Adults feed on crustaceans, fish and molluscs.

Habitat: Shore, wrecks & rocky reefs.

CONSERVATION STATUS



Common Goby
Goby coitianta
Pomatoschistus microps

Size: 18 cm.

Food: Small crustaceans.

Habitat: Prefers shallow habitats with sand or mud bottoms.

CONSERVATION STATUS



Common Starfish
Crosóg Mhara
Cholteann
Asterias rubens

Size: 10 – 30 cm.

Food: Feeds on molluscs and other invertebrates.

Habitat: Found on rocky shorelines.

CONSERVATION STATUS





Common Carp
Carbán Scáthánach
Cyprinus carpio

Size: 120 cm.

Food: Carp are omnivorous. They can eat a herbivorous diet of water plants, but prefer to scavenge the bottom for insects.

Habitat: Carp prefer large bodies of slow or standing water and soft, vegetative sediments.

CONSERVATION STATUS



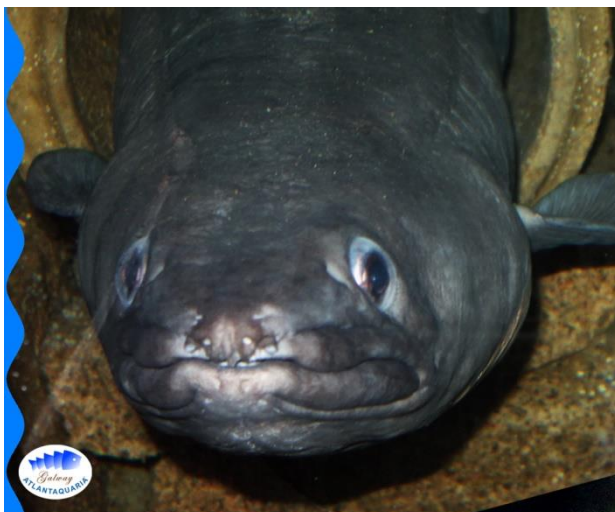
Common Blenny
Ceannrúán
Lipophrys pholis

Size: 20 cms.

Food: Feeds on marine invertebrates and worms.

Habitat: They live on the seabed of rocky shorelines.

CONSERVATION STATUS



Conger Eel
Eascann Choncair
Conger conger

Size: 3 meters.

Food: Nocturnal scavenger, mainly feeding on fish and crustaceans.

Habitat: They usually live amongst rocks and cracks in harbour walls.

CONSERVATION STATUS





Connemara Clingfish
 Súmaire Chonamara
Lepadogaster candollei

Size: 7cms.

Food: Feeds on small invertebrates.

Habitat: Lives on the rocky shore.

CONSERVATION STATUS



Corkwing Wrasse
 Bochar
Symphodus melops

Size: 25 cm.

Food: Feeds on molluscs and crustaceans.

Habitat: This species can be found in areas of rock or eelgrass.

CONSERVATION STATUS



Cushion Star
 Crosóg Mhara Choiteann
Asterina gibbosa

Size: 5 cm.

Food: An opportunistic scavenger, can eat bacteria.

Habitat: Rock pools & low tide areas.

CONSERVATION STATUS





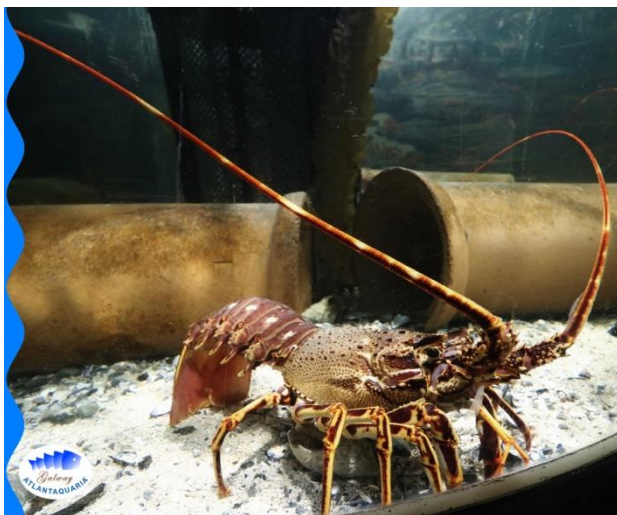
Brown Crab
Portán Dearth
Cancer pagurus

Size: 25 cm.

Food: Scavenger, will also eat shellfish.

Habitat: Found in the North Sea and North Atlantic Ocean.

CONSERVATION STATUS



Crawfish
Piardóg
Palinurus elephas

Size: 24 inches.

Food: Feeds on shellfish, but will scavenge for food.

Habitat: Burrows into the soft sediment of the North Atlantic.

CONSERVATION STATUS



Cuckoo Wrasse
Ballach Muire
Labrus Mixtus

Size: 30 – 40 cm.

Food: Feed mainly on crustaceans, fishes, mollusks, and worms.

Habitat: They can be found amongst the algae on rocky shores.

CONSERVATION STATUS





Cuttlefish
Cudal
Sepia officinalis

Size: 49 cm.

Food: Predators, will eat bony fishes & crustaceans.

Habitat: It lives on sand and mud seabeds.

CONSERVATION STATUS



Dahlia Anemone
Dáilia Anemone
Urticina felina

Size: 120 mm (base or foot).

Food: Diet comprises small fish and crustaceans.

Habitat: Can be found in rock pools, crevices and gullies.

CONSERVATION STATUS



Longhorn Decorator Crab
Maisitheoir portán
Chorilla longipes

Size: Carapace 4.5 cm.

Food: Scavenger, feeds on microorganisms.

Habitat: Prefers shallow habitats with lots of seaweed cover.

CONSERVATION STATUS





Lesser Spotted Dogfish

Catsúilleach Ballach
Scyliorhinus canicula

Size: 100 cms.

Food: Scavenger, feeds on invertebrates, including molluscs and crustaceans.

Habitat: Likes sandy or muddy bottoms.

CONSERVATION STATUS



Dragonet

Lasgán Nimhe
Callionymus lyra

Size: 30 cms.

Food: Worms and crustaceans.

Habitat: Sand and Gravel, depth of 30 metres.

CONSERVATION STATUS



Energy Duck

Lacha fuinnimh
Energis duckis

Size: thats very rude!

Food: Loves wave energy!

Habitat: Found in the Renewable Ocean Energy exhibit at the Aquarium.

CONSERVATION STATUS





Congo Dwarf Clawed Frog

Frog Abhcach
Hymenochirus sp

Size: 6.5 cm.

Food: Feeds on benthic insects.

Habitat: Likes still, stagnant ponds and slow-flowing rivers.

CONSERVATION STATUS



Flame Tetra

Tetra lasair
Hyphessobrycon flammeus

Size: 2.6 cms

Food: Feeds on small insects, worms and plants.

Habitat: South America Brazil, in streams and coastal rivers.

CONSERVATION STATUS



Gilthead Bream

Garbhánach
Órcheannach
Sparus aurata

Size: 70 cms.

Food: Carnivorous, feeds on crustaceans and shellfish

Habitat: Found in seagrass beds and sandy bottoms.

CONSERVATION STATUS





Greater Pipefish
 Snáthaid mhara mhór
Syngnathus acus

Size: 45 cm.

Food: Feeds on small crustaceans.

Habitat: Found over sand or eel grass.

CONSERVATION STATUS



Glowlight Tetra
Hemigrammus erythrozonus

Size: 5 cms (max).

Food: Feeds on a variety of microorganisms.

Habitat: It is found in the rivers of the Amazon Basin of Brazil and Peru.

CONSERVATION STATUS



Goldsinny Wrasse
 Bod Gorm
Ctenolabrus rupestris

Size: 70 cms.

Food: Carnivorous, feeds on shellfish, including mussels and oysters.

Habitat: Found in seagrass beds and sandy bottoms.

CONSERVATION STATUS





Grey Gurnard
Cnúdán Glas
Eutrigla gurnardis

Size: 60 cm.

Food: Feeds on bottom living fish, crustaceans and other invertebrates.

Habitat: This fish can be found at depths of from 10 to 340 metres.

CONSERVATION STATUS



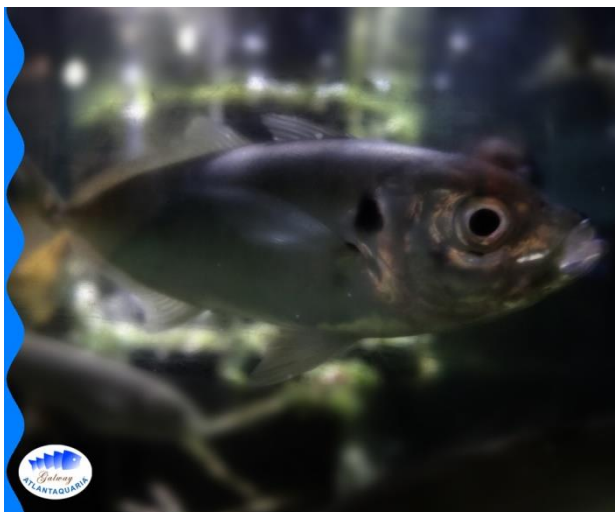
Hermit Crab
Faocha Ghliomaigh
Pagurus bernhardus

Size: 3.5 cms.

Food: Omnivorous detritivore that opportunistically scavenges for carrion.

Habitat: It can be found in tide-pools.

CONSERVATION STATUS



Scad/Horse Mackerel
Bolmán Atlantach
Trachurus trachurus

Size: 70 cm.

Food: Feeds mainly on squid, other fishes & crustaceans.

Habitat: Lives inshore and offshore.

CONSERVATION STATUS





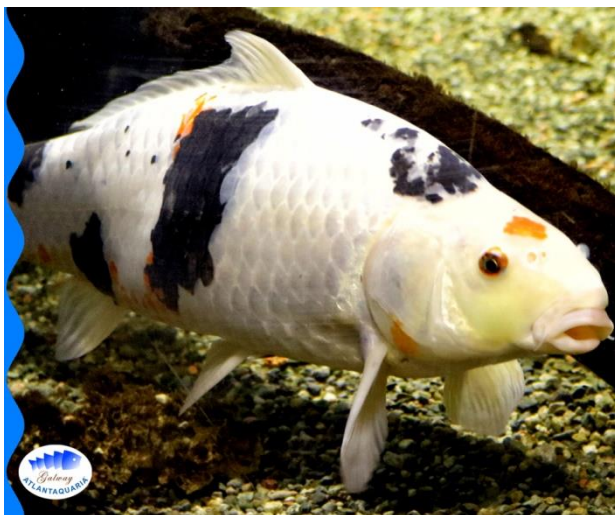
Damsel Humbug
Dascyllus aruanus

Size: 10 cm.

Food: Consumes plant and animal foods alike.

Habitat: Many species live in tropical coral reefs.

CONSERVATION STATUS



Koi Carp*
Carbán Scáthánach
Cyprinus carpio

Size: 120 cm.

Food: Carp are omnivorous. They can eat a herbivorous diet of water plants.

*Koi carp are a domesticated version of the wild carp species, bred for their colour and appearance.

Habitat: Carp prefer large bodies of slow or standing water and soft, vegetative sediments.

CONSERVATION STATUS



Ling
Langa
Molva molva

Size: 200 cm.

Food: Feeds on fish lobsters and cephalopods.

Habitat: Found around wrecks (shipwrecks).

CONSERVATION STATUS





Lobster
Gliomach Eorpach
Homarus gammarus

Size: 50 cm.

Food: Diet includes fish, crabs, clams, mussels, sea urchins, and sometimes even other lobsters!

Habitat: Rocky sea floor, covered with algae.

CONSERVATION STATUS



Lumpsucker
Léasán Leice
Cyclopterus lumpus

Size: 40 cm.

Food: they feed on zooplankton, fish eggs and crustaceans.

Habitat: Lives in the lower shore.

CONSERVATION STATUS



Mirror Carp
Carbán Scáthánach
Cyprinus carpio

Size: 120 cm.

Food: Carp are omnivorous. They can eat a herbivorous diet of water plants, but prefer to scavenge the bottom for insects.

Habitat: Carp prefer large bodies of slow or standing water and soft, vegetative sediments.

CONSERVATION STATUS





Moon Jellyfish

Gealach
mugairle róin
Aurelia aurita

Size: 25–40 cm in diameter.

Food: Feeds by collecting plankton with its cilia (arms).

Habitat: Found throughout most of the world's oceans.

CONSERVATION STATUS



Grey Thick Lipped Mullet

Lannach Glas
Chelon labrosus

Size: 70 cm.

Food: Feeds mainly on small invertebrates and algae.

Habitat: Inhabits shallow and sheltered coasts.

CONSERVATION STATUS



Lesser Octopus

Ochtapas Beag
Eledone cirrhosa

Size: 50cm.

Food: Feeds on crabs and other large crustaceans.

Habitat: Found on rocky coasts, lower shore, sublittoral & up to 500 metres.

CONSERVATION STATUS





Painted Ray
 Ray Péinteáilte
Raja microcellata

Size: 80 cm.

Food: Feeds on other fishes.

Habitat: Found on sandy bottoms.

CONSERVATION STATUS



Perch
 Péirse Eorpach
Perca fluviatilis

Size: 60 cms.

Food: Predatory species; feeds on both invertebrates and fish.

Habitat: Lives in slow-flowing rivers, deep lakes and ponds.

CONSERVATION STATUS



Pike
 Liús
Esox Lucius

Size: 140 cms.

Food: Ambush predator, sometimes preying upon smaller members of their own species.

Habitat: Found in lakes and rivers all over Ireland.

CONSERVATION STATUS





Worm Pipefish
 Pis an Ribe
Nerophis lumbriciformis

Size: 15 cm.

Food: Feeds on small crustaceans.

Habitat: Lives amongst rocks or holdfasts and lower branches of algae.

CONSERVATION STATUS



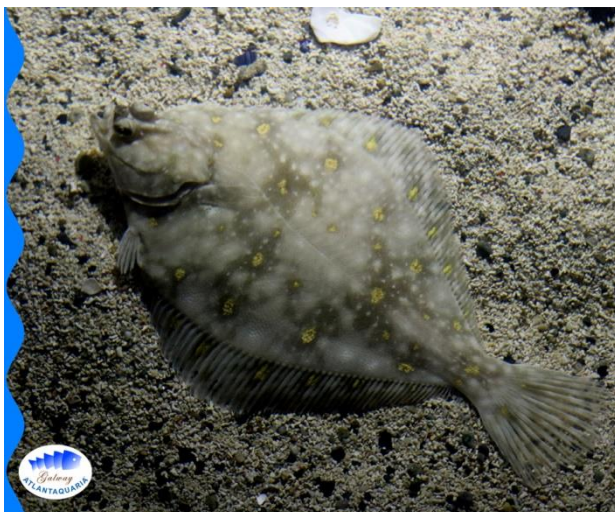
Piranha
Pygocentrus nattereri

Size: 50 cm.

Food: Omnivorous.

Habitat: Native to South America, found in the Amazon River Basin.

CONSERVATION STATUS



PLAICE
 Leathóg
Pleuronectes platessa

Size: 100 cm.

Food: They feed on crustaceans, and bivalves.

Habitat: Shallow, sandy waters.

CONSERVATION STATUS





Plumose Anemone
Metridium senile

Size: 30 cm (high).

Food: Small planktonic organisms.

Habitat: Found in pools on the lower shore and in the shallow seas.

CONSERVATION STATUS



Pollock
Mangach
Pollachius pollachius

Size: 1 metre.

Food: Fish and crustaceans.

Habitat: A demersal fish found near the sea floor.

CONSERVATION STATUS



Pacific cleaner shrimp
Glantóir ribe róibéis
Lysmata amboinensis

Size: 5-6 cm.

Food: Omnivorous and will generally scavenge and eat parasites.

Habitat: An important part of Tropical Reef ecosystems.

CONSERVATION STATUS





Common Prawn
Ribe Roibeis
Palaemon serratus

Size: 10 cm.

Food: A scavenger, will eat anything.

Habitat: Shallow coastal waters.

CONSERVATION STATUS



Red Mouthed Goby
Mac Siobháin
Deargbhéalach
Gobius cruentatus

Size: 18 cm.

Food: Feeds mainly on small crustaceans and worms.

Habitat: Found in Lough Hyne and Beara Peninsula, usually in sandy areas near rocks.

CONSERVATION STATUS



Regal Tang
Tang Rioga
Paracanthurus hepatus

Size: 30 cm.

Food: Feeds on algae, crustaceans and worms.

Habitat: A reef community fish.

CONSERVATION STATUS





3-Bearded Rockling
Donnán Trí Ribe
Gaidropsarus vulgaris

Size: 60 cm.

Food: Feeds mainly on crustaceans and worms.

Habitat: Prefers inshore habitats with sand or mud bottoms.

CONSERVATION STATUS



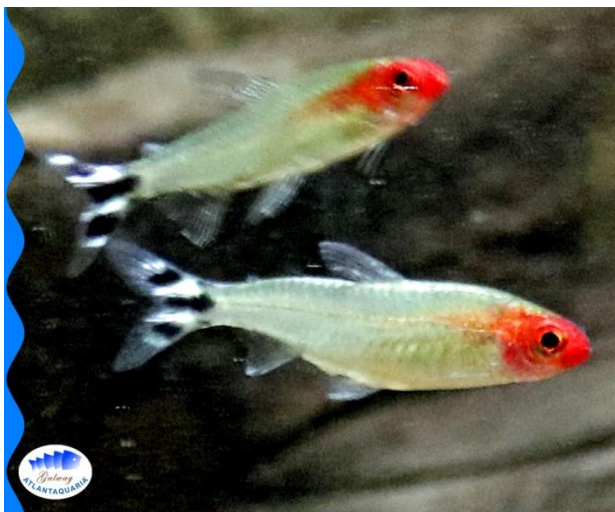
Rudd
Ruán
Scardinius erythrophthalmus

Size: 45-50 cm.

Food: Omnivorous, and will feed on insects and algae.

Habitat: It prefers shallow weedy areas in lakes.

CONSERVATION STATUS



Rummynose Tetra
Hemigrammus rhodostomus

Size: 4.5 cms

Food: Feeds on live bloodworms, Invertebrates and algae.

Habitat: Rio Orinoco and the lower Amazon basin.

CONSERVATION STATUS





Sea Cucumber
Súmaire Cladaigh
Holothuria forskali

Size: 30 cms.

Food: Feeds on sediment.

Habitat: It is found amongst boulders and rocks.



CONSERVATION STATUS



Seahorse
Capall farráige
Hippocampus erectus

Size: 20 cm.

Food: Feeds on minute crustaceans.

Habitat: Sheltered areas such as seagrass beds, coral reefs, and mangrove forests.



CONSERVATION STATUS



Sea Scorpion
Scairpiasc Spíonghearr
Myoxocephalus scorpius

Size: 15-30 cm.

Food: Feeds on fishes and large crustaceans.

Habitat: Found on rocky bottoms with sand or mud.



CONSERVATION STATUS





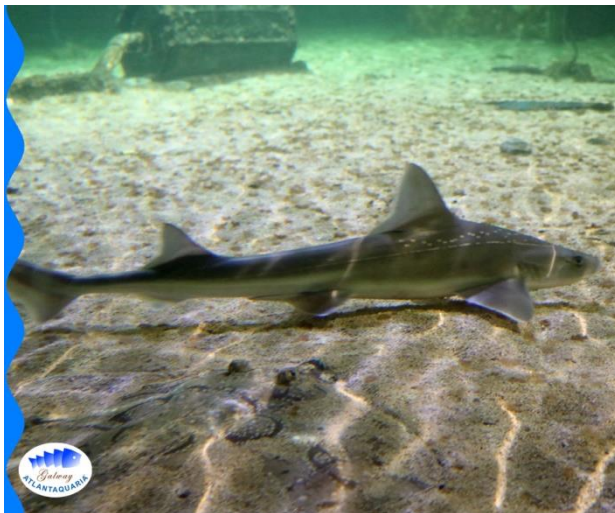
Slipper Lobster
Gliomach Slipéir
Scyllarus arctus

Size: 55mm.

Food: Eats a variety of molluscs, including limpets, mussels and oysters.

Habitat: Typically bottom dwellers of the continental shelves.

CONSERVATION STATUS



Starry Smooth Hound
Scoirneach Ballach
Mustelus asterias

Size: 1.5 metres.

Food: Feeds on crustaceans, such as crabs, lobsters and molluscs.

Habitat: Found on the continental shelves.

CONSERVATION STATUS



Snakelocks Anemone
Bundún nathairiúl
Anemonia viridis

Size: 10 cm.

Food: Organic particles.

Habitat: In rock pools or seaweed down to 23 metres.

CONSERVATION STATUS





Spiny Spider Crab

Portán Faoilinne
Spionach
Maia squinado

Size: 12 cm (carapace).

Food: Scavenger, feeds on organisms including seaweeds and molluscs.

Habitat: Found throughout the Atlantic.

CONSERVATION STATUS



Spiny Starfish

Crosóg Choilgneach
Marasterias glacialis

Size: 70 cm.

Food: Feeds on mussels and scallops.

Habitat: Found on both sheltered muddy substrates, and on rocks.

CONSERVATION STATUS



Spotted Ray

Roc Mín
Raja Montigui

Size: 40-60 cm.

Food: Feeds mainly on crustaceans and molluscs.

Habitat: Prefers habitats with sand or mud bottoms.

CONSERVATION STATUS





Sea Stickleback
Garmachán Farráige
Spinachia spinacea

Size: 22 cm.

Food: A predator that eats plankton and fish fry.

Habitat: Native to coastal waters in the northeastern Atlantic.

CONSERVATION STATUS



Tench
Cúramán
Tinca tinca

Size: 20 cm.

Food: Feeds on detritus, benthic animals and plant materials.

Habitat: Found close to the bottom of shallow, densely vegetated lakes.

CONSERVATION STATUS



Thornback Ray
Roc Garbh
Raja Clavata

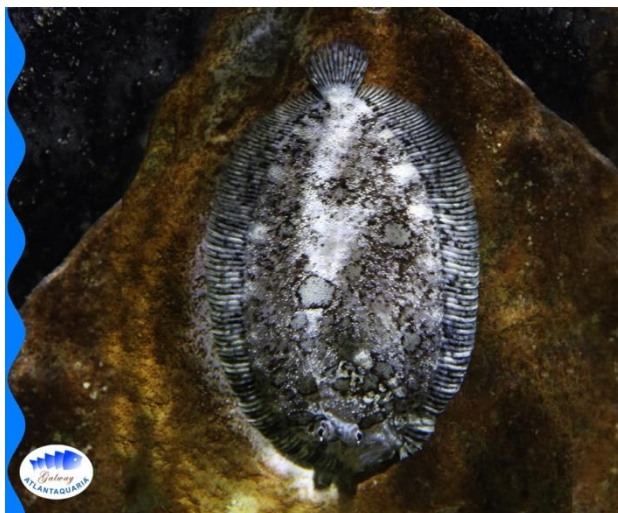
Size: 100 cm.

Food: Feeds on crustaceans and molluscs.

Habitat: Open and shallow seas.

CONSERVATION STATUS





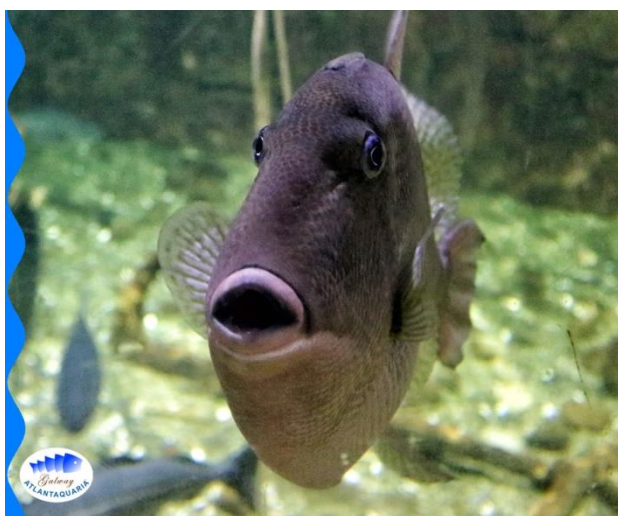
Topknot
Leathóg Leice
Zeugopterus punctatus

Size: 30 cm.

Food: Feeds on invertebrates and small fish.

Habitat: Found inshore and offshore, near the sea bottom.

CONSERVATION STATUS



Grey Trigger Fish
Iasc Trucir
Balistes capriscos

Size: 44 cm.

Food: Feeds on fish, molluscs and crustaceans.

Habitat: Reefs and rocky areas.

CONSERVATION STATUS



Tub Gurnard
Cnúdán Gorm
Chelidonichthys lucerna

Size: 75 cm.

Food: A hunter that feeds on fish and worms.

Habitat: Found over sandy beds.

CONSERVATION STATUS





Turbot
Turbard
Scophthalmus maximus

Size: 100 cm.

Food: Carnivorous,
Adults mainly on fish
and cephalopods.

Habitat: living on sandy
and muddy bottoms.

CONSERVATION STATUS



Undulate Ray
Roc Dústríoctha
Raja undulata

Size: 100 cms.

Food: Feeds on other
fish and crustaceans.

Habitat: Found on
sandy and muddy
bottoms.

CONSERVATION STATUS



Purple Sea Urchin
Urchin farrage corcra
Arabica punctulata

Size: 10 cms.

Food: Feeds on kelp
and molluscs.

Habitat: Inhabits the
rocky intertidal zone.

CONSERVATION STATUS





Edible Sea Urchin
Urchin farrage inite
Echinus esculentus

Size: 10 cms.

Food: Feeds on kelp and molluscs.

Habitat: Inhabits the rocky intertidal zone.

CONSERVATION STATUS



Velvet swimming crab
Luaineachán
Necora puber

Size: 10 cms (carapace).

Food: Feeds on crustaceans, molluscs and fish.

Habitat: Found chiefly in rocky intertidal zones.

CONSERVATION STATUS



Atlantic wolffish
Anarhichas lupus

Size: 150 cm.

Food: Feeds on molluscs, & scallops.

Habitat: Colder, northern water in rocky areas.

CONSERVATION STATUS





Wreck Fish
Breac Raice
Polyprion americanus

Size: 210 cms.

Food: Feeds on large ocean cephalopods, crustaceans, and other bottom-dwelling fishes.

Habitat: Open ocean at depths between 40 - 600 m.



Atlantic wolffish
Anarhichas lupus

Size: 150 cm.

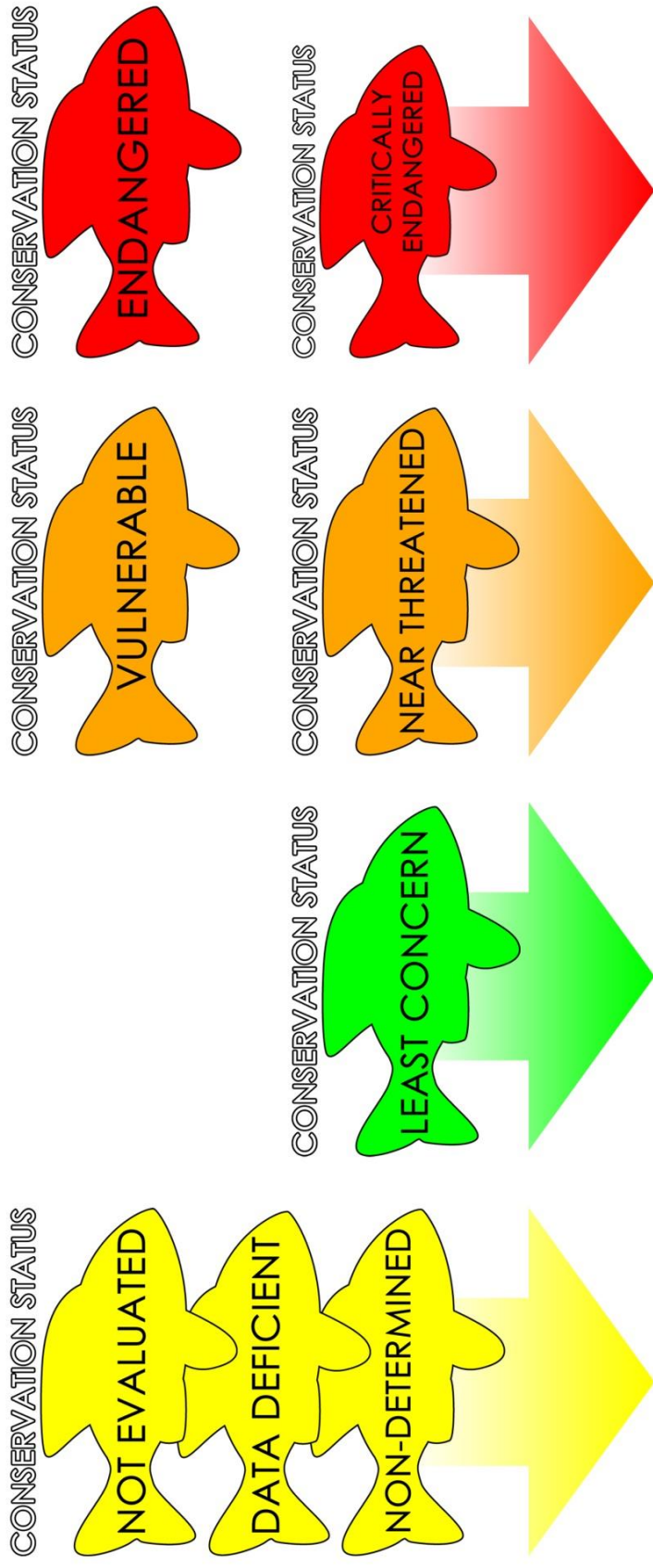
Food: Feeds on molluscs, crustaceans & scallops.

Habitat: Prefers very cold water and rocky areas.



¹ Please note this list was updated on the 18/05/2017 some animals are seasonal and may not be in the Aquarium when you visit

GALWAY ATLANTAQUARIA MARINE ANIMAL CONSERVATION GUIDE



About these guides

These icons describe the marine animals 'risk' of conservation and endangerment. The icons are styled on The IUCN Red List of Threatened Species™.

Description

YELLOW: Not a good or bad colour, it represents a group of animals that are too hard to evaluate, or so abundant that proving its status is too difficult (e.g. Dogfish).

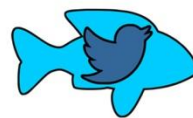
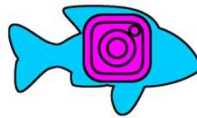
GREEN: A good colour, shows that the animal is abundant and classified as such.

AMBER: Shows that an animal is falling towards danger, and is at risk!

RED: Animals at this level need a collective effort to stop the eventual extinction of these animals.



www.nationalaquarium.ie



Follow us on Social Media /GalwayAquarium

